



DORATO
RESOURCES INC

Condor Gold-Copper Belt in Northwest Peru



CANADA
TSX-V: DRI

USA
OTCQX: DRIF

EUROPE
Frankfurt: DO5

CAPITALIZATION (as of Jan 17, 2011)

Shares issued 70.9 million
 Shares fully diluted 90.8 million
 Recent Price \$1.35
 Market Capitalization: \$96 million
 52 week high/low: \$0.53 - \$1.61

MANAGEMENT & DIRECTORS

Keith Henderson President & CEO
 John Drobe VP Exploration
 Carlos Ballon Director
 Gordon Neal Director
 Dr. Mark Cruise Director
 Anton Drescher Director

CORPORATE OFFICE
Dorato Resources Inc.
 1920 - 1188 West Georgia St.
 Vancouver, BC,
 Canada, V6E 4A2

Phone +1 604 638 5817
 Fax +1 604 408 7499
 info@doratoresources.com
 www.doratoresources.com

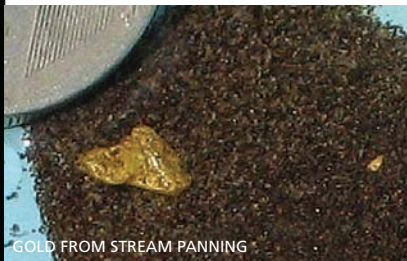
DORATO RESOURCES INC. is a mineral exploration company focused on the highly prospective Cordillera del Condor Gold District in northern Peru, adjacent to the border with Ecuador, and one of the most important gold-bearing districts in the region since pre-Incan times.

Dorato, through a series of option agreements, has the right to wholly acquire an extensive land package of approximately 1,050 square kilometres - providing the Company a highly strategic position in this emergent gold district. Dorato is well funded having raised \$15 million in January 2010.

Modern exploration on the Ecuadorian side of the border has successfully delineated a number of world-class gold and copper deposits. These include Kinross Gold's Fruta del Norte gold deposit with an inferred resource of 13.6 million contained ounces of gold averaging 7.23 g/t gold, and the Corriente Copper Belt (sold in 2010 by Corriente resources), hosting approximately 25 billion pounds of copper and 4.5 million ounces of gold. The Peruvian portion of the Cordillera, while sharing key geological features and stratigraphy with Ecuador, has remained almost entirely unexplored until now.

Exploration is undertaken by Minera Afrodita, who hold title in the area. Exploration since August 2008 has significantly advanced the district with several high priority targets undergoing drilling or at drill-ready stage in the Taricori Block. Three deposit types are now being targeted: 1) epithermal gold, 2) porphyry copper-gold, and 3) skarn gold-copper.

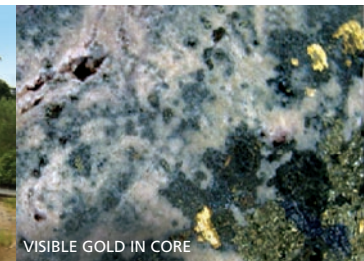
The current priority target is Lucero, where exploration has identified a compelling geophysical and geochemical anomaly that is now being drill-tested. Finally and perhaps most importantly, 85% of the land position has not yet been explored—an airborne geophysical survey is in progress to screen this extensive belt, using techniques already proven to work in the belt.



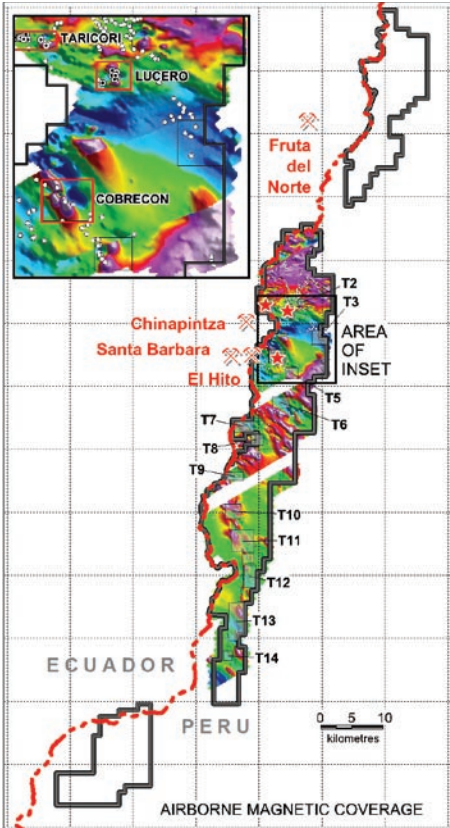
GOLD FROM STREAM PANNING



REGIONAL PROSPECTING



VISIBLE GOLD IN CORE



LUCERO GOLD SKARN AND PORPHYRY COPPER TARGET

The Lucero discovery was defined initially by coincident magnetic and electromagnetic geophysical anomalies. Follow-up work identified gold and copper soil and rock anomalies. Surface rock sampling and trenching (48.9 metres grading 3.97 g/t gold and 0.25% copper) has so far defined a mineralized zone over a 1.1 kilometre by 750 metre area.

Mineralization is hosted in a simple stratigraphic sequence of calcareous sediments overlying potassic-altered intrusive rocks interpreted to be of Late Jurassic age and the same host as in the porphyry deposits to the north in Ecuador. The widespread alteration in the intrusive and reactive sedimentary package shows high potential for a bulk-tonnage deposit.

Gold and copper mineralization occurs in two styles. The first is as skarn zones at the contact of limestone and underlying sandstone, where there is massive magnetite and sulphide replacement of the calcareous layers. Gold and copper are associated with semi-massive zones of chalcopyrite-pyrrhotite in particular. The second is as disseminated chalcopyrite and pyrite within the sandstone sequence and to a lesser extent in the underlying intrusion. Current drilling is targeting the source structure or structures which funneled the mineralizing fluids into the area. Importantly, the geochemical patterns indicate a northwest trend to the gold mineralization, which is parallel to the trends seen at the Mirador/Mirador Norte porphyry deposits (609 MT at 0.58% copper and 0.17 g/t gold indicated, with additional Inferred of 281 Mt at 0.52% copper and 0.15 g/t gold.) as well as the Panantza and San Carlos deposits, 40 km to the north (Inferred 463 Mt at 0.66 % Cu for Panantza, and 600 Mt at 0.59 % Cu at San Carlos).

COBRECON PORPHYRY COPPER AND SKARN TARGET

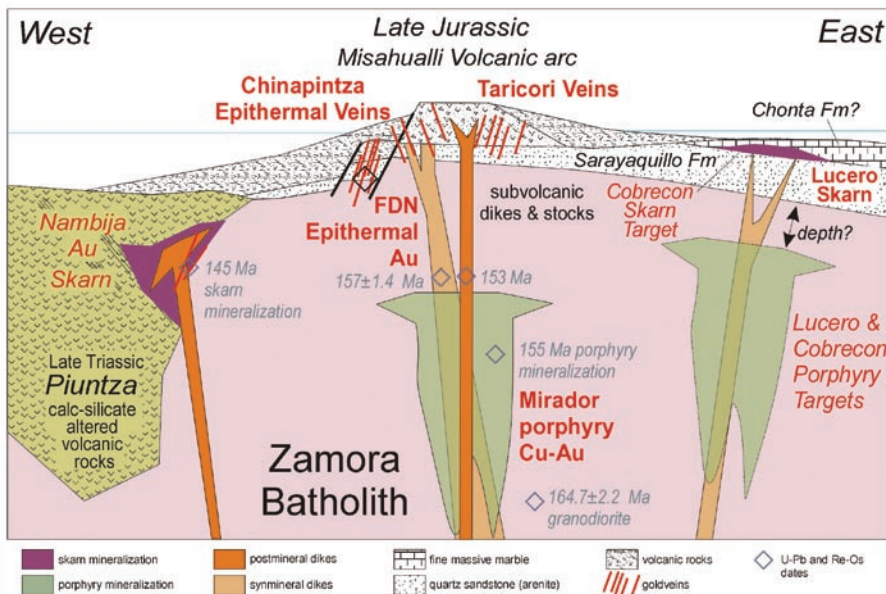
Cobrecon is a high-priority target based on geophysical-geochemical anomalies that indicate the possible presence of both skarn and porphyry copper targets, similar to Lucero. Cobrecon is located 6 km southwest of Lucero. Zonation of the preliminary soil geochemical anomaly suggests a porphyry system is present, with possibly an adjacent skarn zone along the northeast margin.

Similar, drill-tested mineralization occurs just three kilometres to the southwest in Ecuador, at El Hito and Santa Barbara. Geological evidence indicates they are probably the same age as the porphyry deposits to the north in Ecuador, but are less well-mineralized relative to those.

El Hito, situated on the Peruvian border, contains copper mineralization in a coarse-grained quartz diorite to granodiorite stock. In 2000, Valerie Gold drilled four core holes in the central part of the deposit on the Ecuadorian side, which returned intersections up to 300 metres long grading about 0.3% Cu with minor gold. Santa Barbara is a high-level Cu-Au porphyry-skarn deposit located about 4 km west of El Hito. Mineralization is described as occurring in stockwork zones in altered porphyry and within skarn zones in a roof pendant of Misahualli volcanic rocks. Results of trenching and drilling by Valerie Gold indicate a potential Inferred resources of >700,000 oz Au (21 million tonnes of approximately 1 g/t Au and 0.12% Cu).

OTHER TARGETS

The regional airborne geophysical survey that was initiated in late 2010 has generated 12 new targets, in addition to the Lucero (T1) and Cobrecon (T4) targets. Additional targets are likely to emerge as the remainder of the geophysical data is received. The first of these new anomalies are now being investigated on the ground with detailed silt and reconnaissance rock sampling and mapping. The targets will be re-prioritized based on the geochemical and geological results. The remainder of the geophysical survey will be completed in the first quarter of 2011.



A member of the
CG
Cardero Group
of Companies

DISCLAIMER: This material contains "forward-looking statements" within the meaning of the United States Private Securities Litigation Reform Act of 1995 and "forward looking information" within the meaning of the British Columbia Securities Act and the Alberta Securities Act. Generally, the words "expect", "intend", "estimate", "will" and similar expressions identify forward-looking information. By their very nature, forward-looking statements are subject to known and unknown risks and uncertainties that may cause our actual results, performance or achievements, or that of our industry, to differ materially from those expressed or implied in any of our forward-looking information. Statements in this press release regarding Dorato's business or proposed business, which are not historical facts are forward looking information that involve risks and uncertainties, such as estimates and statements that describe Dorato's future plans, objectives or goals, including words to the effect that Dorato or management expects a stated condition or result to occur. Since forward-looking statements address events and conditions, by their very nature, they involve inherent risks and uncertainties. Actual results in each case could differ materially from those currently anticipated in such statements. Investors are cautioned not to place undue reliance on forward-looking statements, which speak only as of the date they are made. All of the Company's Canadian public disclosure filings may be accessed via www.sedar.com and readers are urged to review these materials, including the technical reports filed with respect to the Company's mineral properties. The foregoing commentary is based on the beliefs, expectations and opinions of management on the date the statements are made. The Company disclaims any intention or obligation to update or revise forward-looking information, whether as a result of new information, future events or otherwise.